

Allowable Load Combinations for Connection

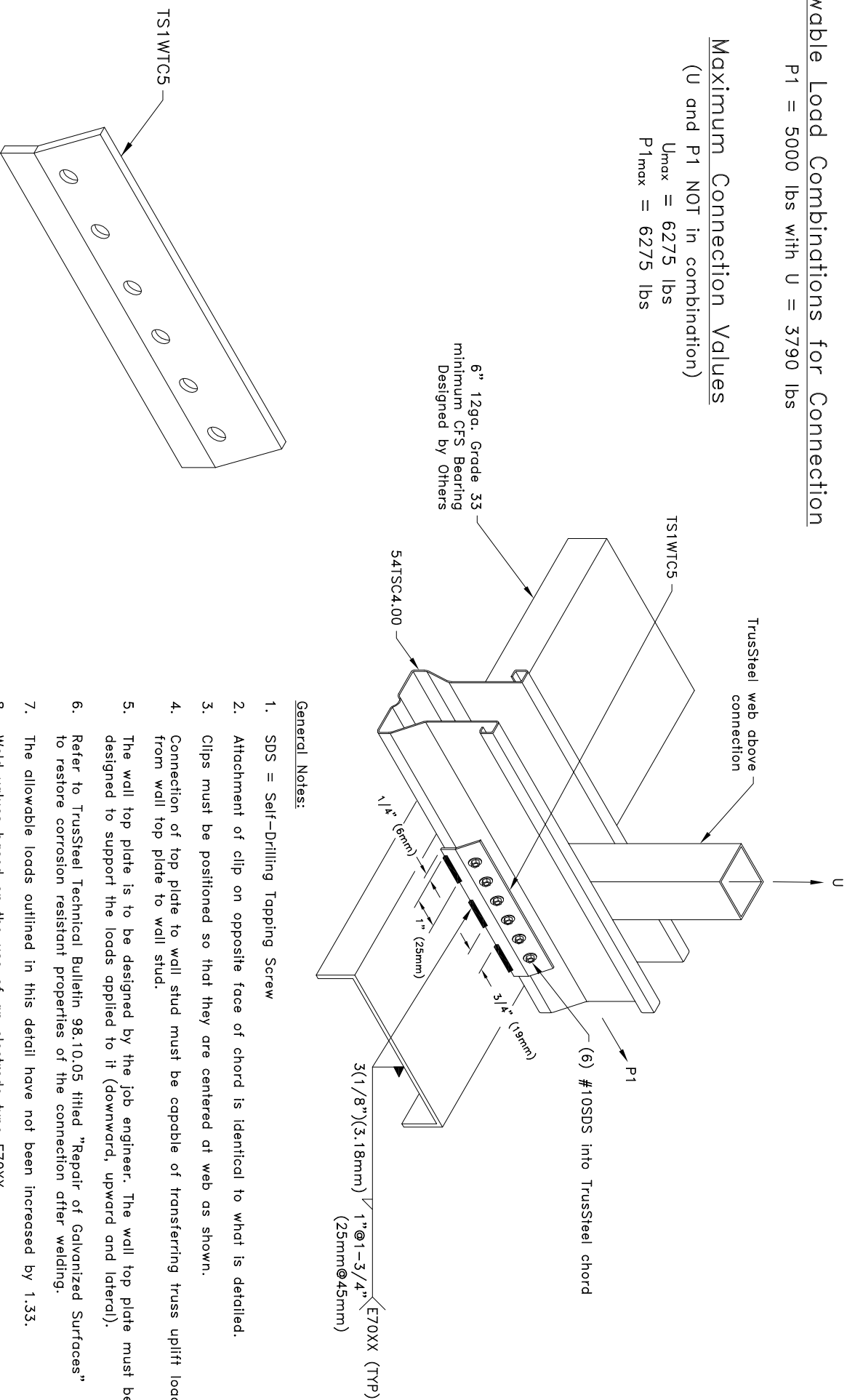
P1 = 5000 lbs with U = 3790 lbs

Maximum Connection Values

(U and P1 NOT in combination)

U_{max} = 6275 lbs

P1_{max} = 6275 lbs



General Notes:

1. SDS = Self-Drilling Tapping Screw
2. Attachment of clip on opposite face of chord is identical to what is detailed.
3. Clips must be positioned so that they are centered at web as shown.
4. Connection of top plate to wall stud must be capable of transferring truss uplift load from wall top plate to wall stud.
5. The wall top plate is to be designed by the job engineer. The wall top plate must be designed to support the loads applied to it (downward, upward and lateral).
6. Refer to TrusSteel Technical Bulletin 98.10.05 titled "Repair of Galvanized Surfaces" to restore corrosion resistant properties of the connection after welding.
7. The allowable loads outlined in this detail have not been increased by 1.33.
8. Weld values based on the use of an electrode type E70XX.
9. For other allowable load combinations, contact a TrusSteel Engineer.
10. Cold-Formed Steel Calculations are per the 2004 addendum to the AISI 2001 North American Specification for the design of Cold-Formed Steel Structural Members.

TrusSteel
An ITW Company

www.TrusSteel.com

Florida: 1950 Marley Drive / Haines City, FL 33844 / (800) 755-6001
Missouri: 13389 Lakelront Drive / Earth City, MO 63045 / (800) 326-4102
California: 8351 Rovana Circle / Sacramento, CA 95828 / (800) 877-3678

TS1WTC5 Clip Pair to Cold-Formed Steel

ITW Building Components Group, Inc. shall not be responsible for any performance failure in a connection due to a deviation from this detail. Any variation from this detail shall be approved in advance by ITW Building Components Group, Inc.

Custom Detail:

TS-CD-TB-CF8-001

Date:

06/23/10

Custom Detail:

Truss-to-Bearing Connection